

BAYS FOR SALE or LEASE

Tall Pines Industrial Park—Phase I Up to 8,680 sf Industrial Bays with Offices



- Aggressive Sale and Rental Rates—Industrial Bays for sale, rent.
- Easy access to Florida's Turnpike, I-95— near intersection of Southern Blvd/Jog Road
- Bay sizes from 2,170sf with a 220 sf A/C'd office per bay. Bays may be combined.
- Total building space: 52,242 sf. (two bldgs.)
- Single Story, (no mezzanine). .
- Parking: 76 total spaces. Assigned parking.
- One Grade Level 12 ft X 12 ft overhead door in rear. Man door in rear.
- 17.5 ft clear ceiling height.
- CBS construction with Twin Tee Roof. CBS demising walls..
- Three-phase power (120/208V wye), 125 amp
- Zoned IL, Palm Beach County.
- Built in 2003.

 **CORNERSTONE
REALTY, INC.**
For Information Call:
FREDERICK J. SCHMIDT, CCIM
(561) 793-9810 
Individual Member

Visit our website:
<http://www.cri-re.com>
Note: This offering subject to errors, omissions, prior sale or withdrawal without notice.

① TYPICAL FLOOR
PLAN FOR UNITS
350-A
350-L

② TYPICAL FLOOR
PLAN FOR UNITS
350-B THRU 350-K

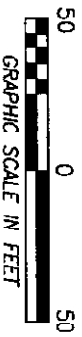
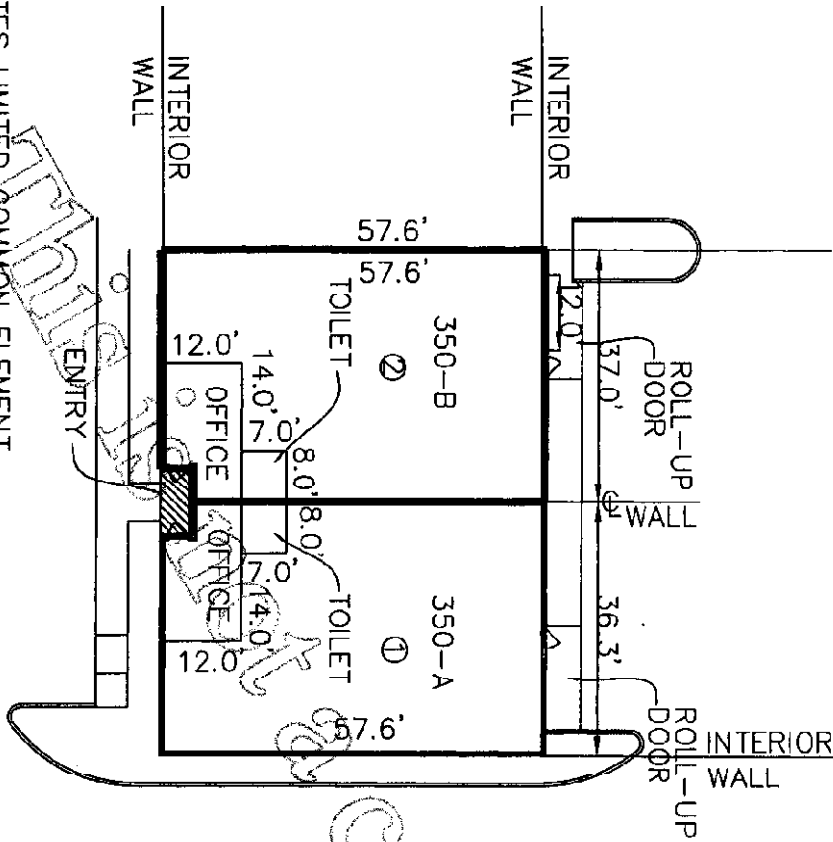


EXHIBIT B
TO THE DECLARATION OF
CONDOMINIUM OF
TALL PINES INDUSTRIAL PARK,
A CONDOMINIUM
TYPICAL FLOOR/PLAN
BUILDING 350



LEGEND:

INDICATES LIMITED COMMON ELEMENT

350-A INDICATES UNIT DESIGNATION

FLOOR ELEVATION=19.10

CEILING ELEVATION=37.60

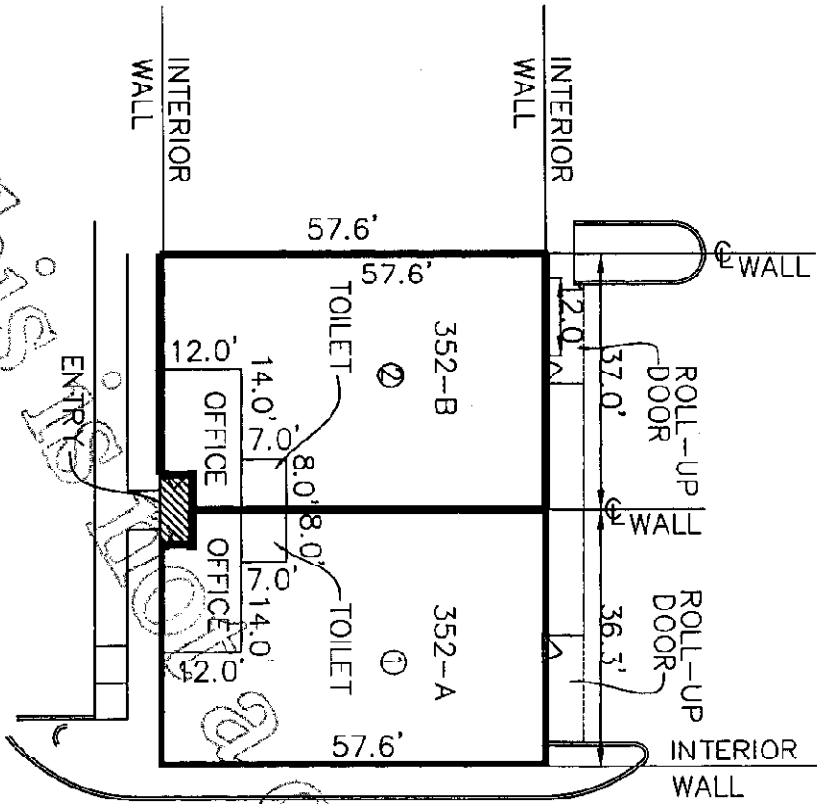
| | | | |
|--------|--------|----------|----------|
| FIELD: | PSG | DATE: | 3/1/2005 |
| DRAWN: | K.C. | SCALE: | NA |
| SHEET: | 4 of 8 | JOB No.: | 05-209 |

Dean Surveying and Mapping, Inc.
The Measuring Line Shall Go Forth Jeremiah 31:39

5114 Overseas Blvd
Suite 102
West Palm Beach, Florida 33417
Tel: (561) 825-8748
Fax: (561) 825-4588

① TYPICAL FLOOR PLAN FOR UNITS 352-A 352-L

② TYPICAL FLOOR PLAN FOR UNITS 352-B THRU 352-K



LEGEND:

▨ INDICATES LIMITED COMMON ELEMENT

350-A INDICATES UNIT DESIGNATION

FLOOR ELEVATION=19.10

CEILING ELEVATION=37.60

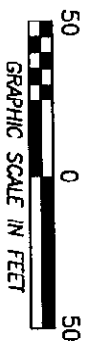


EXHIBIT B
TO THE DECLARATION OF
CONDOMINIUM OF
TALL PINES INDUSTRIAL PARK,
A CONDOMINIUM
TYPICAL FLOOR PLAN
BUILDING 352

| | | | |
|--------|--------|----------|----------|
| FIELD: | PSG | DATE: | 3/1/2005 |
| DRAWN: | K.C. | SCALE: | NA |
| SHEET: | 3 of 8 | JCB No.: | 05-209 |

Dean Surveying and Mapping, Inc.
The Measuring Line Shall Go Forth Jeremiah 31:39

5114 Okeechobee Blvd.
Suite 102
West Palm Beach, Florida 33417
Tel: (561) 825-8748
Facsimile: (561) 825-4558

