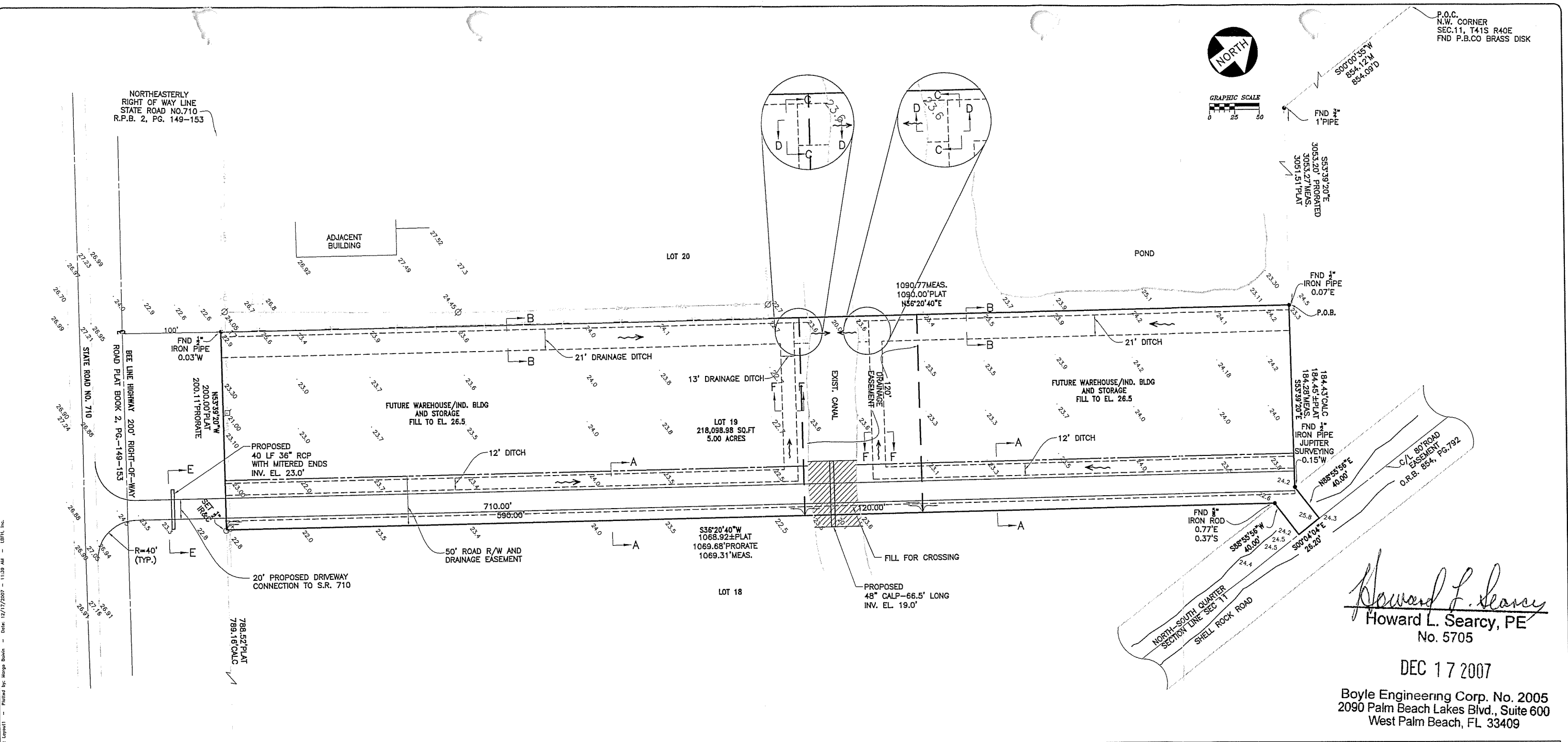




GRAPHIC SCALE
0 25 50

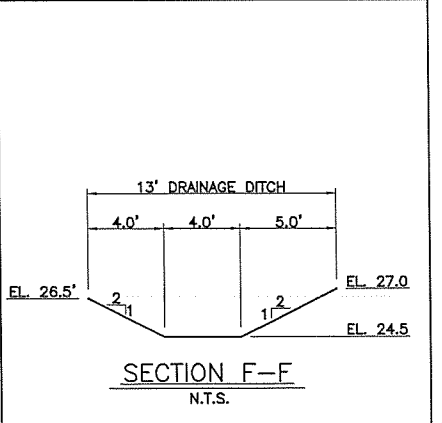
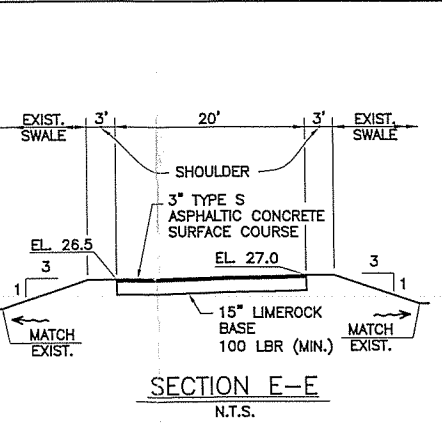
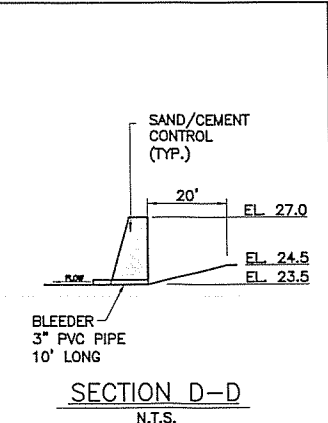
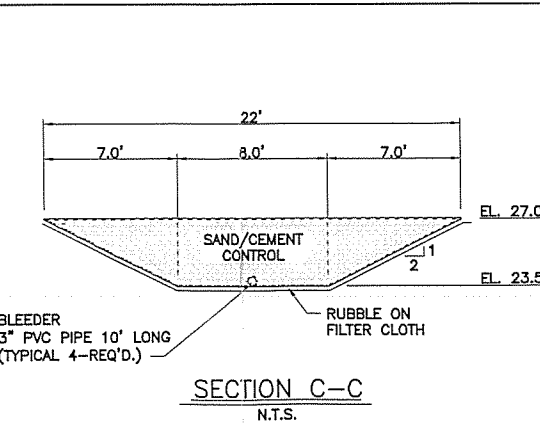
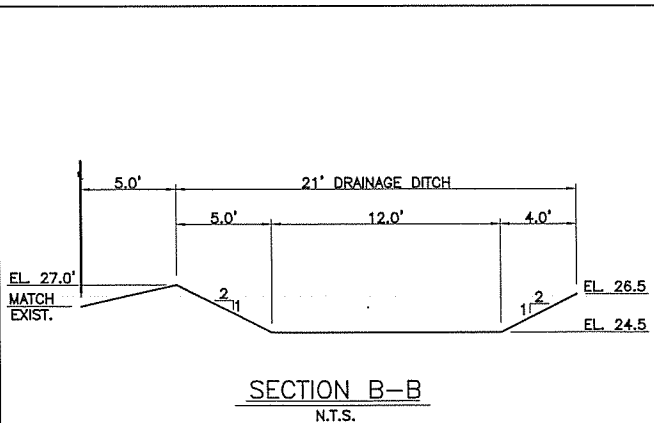
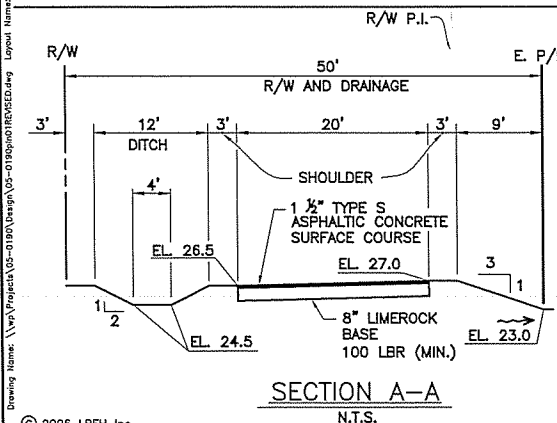
NORTHEASTERLY
RIGHT OF WAY LINE
STATE ROAD NO. 710
R.P.B. 2, PG. 149-153



Howard L. Searcy
Howard L. Searcy, PE
No. 5705

DEC 17 2007

Boyle Engineering Corp. No. 2005
2090 Palm Beach Lakes Blvd., Suite 600
West Palm Beach, FL 33409



DATE	BY	REVISIONS
01/29/07	JMP	REVISED SITE PLAN AND CROSS SECTIONS PER SFWD COMMENTS
01/08/07	M.G.	REVISED PIPE AND ADDED CROSS SECTION 'E-E' PER FDOT COMMENTS

Date: 1/18/2007
Scale: 1"=50'
Design By: H.L.S.
Drawn By: M.S.B.
Check By: H.L.S.

VERIFY SCALE
BAR IS EQUAL TO ONE INCH ON ORIGINAL DRAWING

0 1
ADJUST ALL SCALED DIMENSIONS ACCORDINGLY

lbh INC.
CONSULTING CIVIL ENGINEERS, SURVEYORS & MAPPERS
"Partners For Results, Value By Design"

2090 Palm Beach Lakes Blvd, Suite 600, West Palm Beach, FL 33409
(561) 684-3375 Fax: (561) 689-8531
BPR & FBPE License No: 959 www.lbh.com

BEELINE HIGHWAY

WATER'S EDGE DEVELOPERS, LLC

LBFH PROJECT No: 31507
(Formerly 05-0190)
SHEET 1